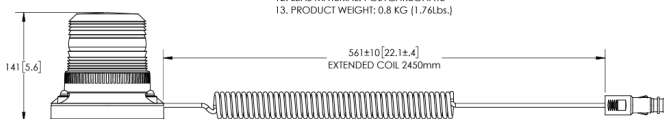
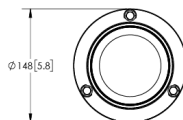


EAN: 5414184441484



### SPECIFICATIONS

1. CERTIFICATIONS: ECE R10  
Note: Unique components, accessories and hardware kits are not typically included in the product certification test protocols. Unless otherwise Specified, the product certification referred to herein are predicated Upon the base product model configuration.
2. FLASH MODE: 135 ± 15 FPM, DOUBLE FLASH
3. VOLTAGE (NOMINAL): 12/24 VDC
4. VOLTAGE (EXTREME): 10 to 36VDC
5. CURRENT (RMS): 1.06A (@ 10 VDC NOMINAL)
6. CURRENT (PEAK): 1.85A (@ 10 VDC NOMINAL)
7. POWER (RMS MAXIMUM): 23W (@ 24 VDC NOMINAL)
8. TEMPERATURE RANGE: -20°C (-4°F) TO 50°C (122°F)
9. CONNECTION: CIGARETTE PLUG
10. MOUNTING: MAGNETIC
11. BASE MATERIAL: ASA
12. LENS MATERIAL: POLYCARBONATE
13. PRODUCT WEIGHT: 0,8 KG (1.76lbs.)

## Specificaties

Aansluiting	Stekker voor sigarettenaansteker	Gewicht (kg)	0,8 Kg
Aantal LEDs	9	Hoogte mm	142 mm
Aantal flitspatronen	1	Hoogte range	131 - 170 mm
Bedrijfstemperatuur	-20°C / +50°C	IP-graad	IP65
Bestelbaar per	1	Kleur	Groen
Bevestiging	Magnetisch	Kleur lens	Groen
Diameter mm	148 mm	Lichtbron	LED
ECE R65 Klasse 1	Nee	Verpakking	Witte doos met etiket
EMC	EMC R10	Voeding	12V - 24V
EMC R10	Ja		