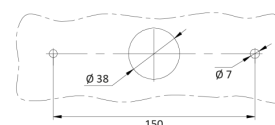
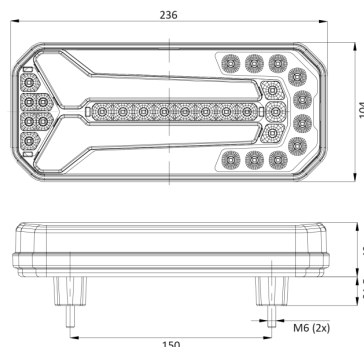


LIGHTS FRONT AND REAR

1750/2

LED rear light | left+right | 12-24V

EAN: 5414184001015



Specifications

Certification	ECE
Color	Amber/red/white
Colour of lens	Amber/red/white
Connection	Open cable ends
EMC	EMC R10
EMC R10	Yes
Height mm	104 mm
IP-degree	IP66+IP68
Length mm	236 mm
Length of cable (m)	2 m
Light source	LED
Mounting	Surface mount
Mounting side	Rear - Left & right
Operating voltage	12V - 24V

Operation temperature	-30°C / +65°C
Packing	POS packaging
Supplied with	Mounting screws
Thickness mm	40 mm
To be ordered by	1
Type	Rear lights
Weight (kg)	0,7 Kg
With Dynamic direction indicator	Yes
With Reversing light	Yes
With Tail-Stop	Yes
With no triangular reflector	Yes